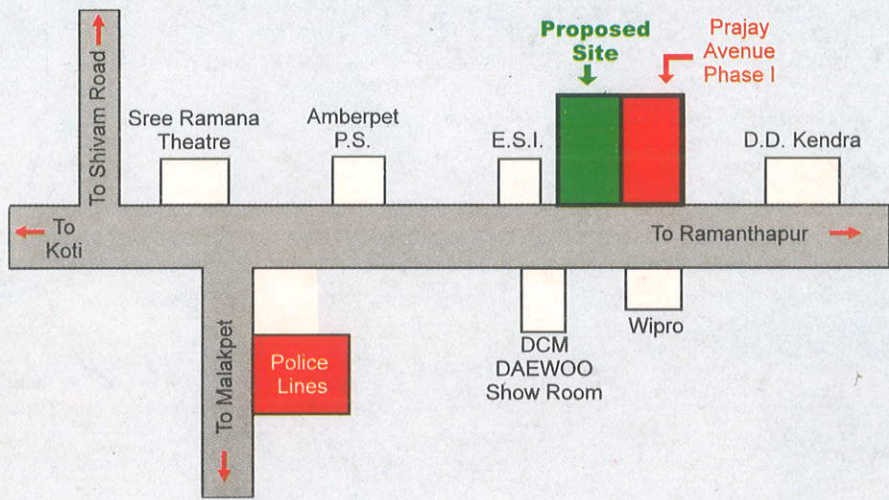


HIGHLIGHTS

- Clear Title of Land and Quality construction
- Flats layout planned as per Vasthu with cross ventilation for all Flats
- Location : Well developed and well connected to all parts of the Twin Cities
- 24 hours water supply
- Provision of Lift
- Just 4 K.M. from Koti
- Loans are arranged through LIC/HDFC/Etc.,
- Affordable price
- Easy terms of payments

LOCATION MAP



PRAJAY ENGINEERS SYNDICATE LTD.

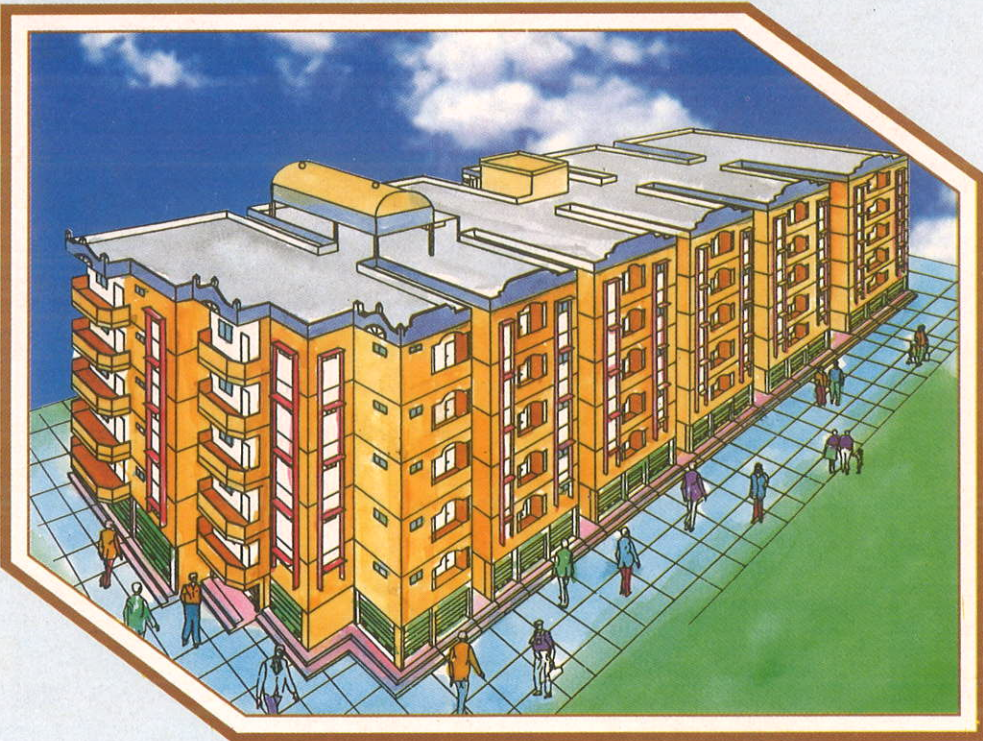
4-1-2/4, Eden Garden Road, Ramkote, Hyderabad,
Ph : 4753101, 4753730, 4752752, 4753332. Fax : 4759310

Own your Flat with your monthly rent - Prajay makes it possible

nilac-The Brochure Company

When you do things right, Success comes, but naturally

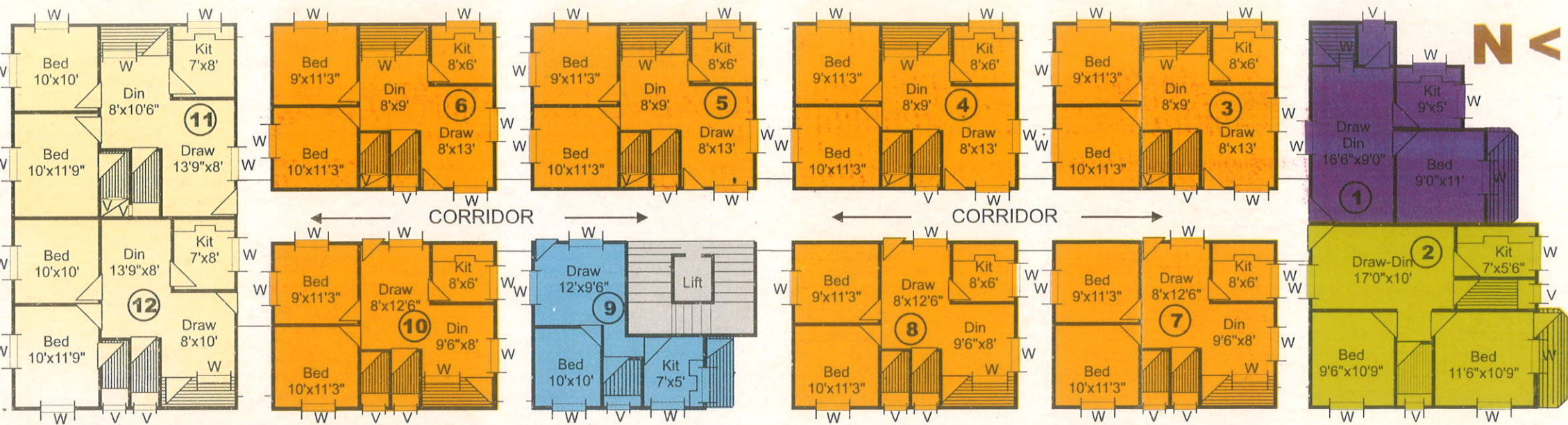
Presenting **PHASE II**
PRAJAY AVENUE
A M B E R P E T



PRAJAY ENGINEERS SYNDICATE LTD.

FLOOR PLANS

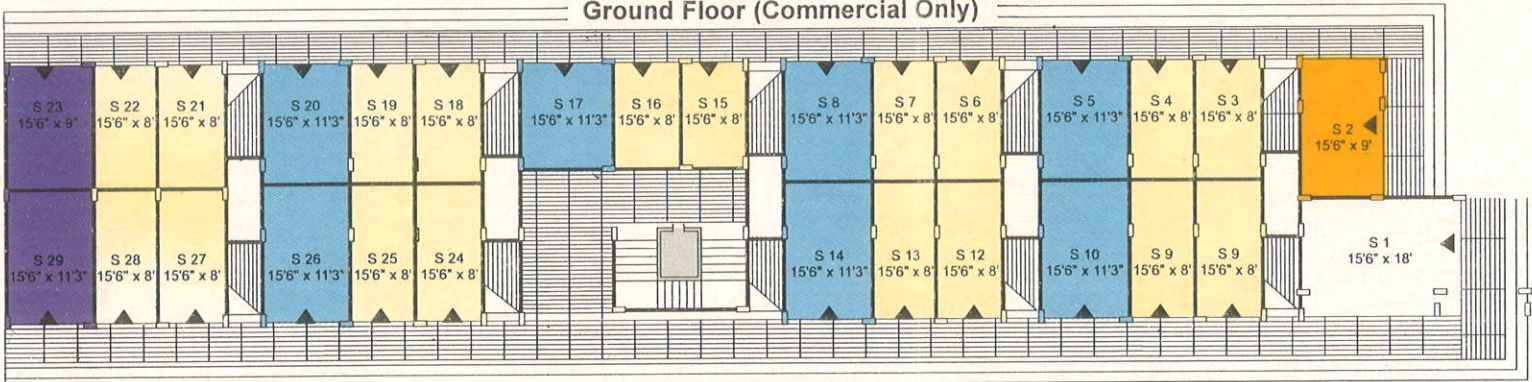
Typical Floor Plan (Residential)



| Flat No. | Plinth Area | Scooter Parking | Total Area |
|--------------------|-------------|-----------------|------------|
| 1. | 535 Sft | 25 Sft | 560 Sft |
| 2. | 670 Sft | 25 Sft | 695 Sft |
| 3,4,5,6,7, 8 & 10. | 640 Sft | 25 Sft | 665 Sft |
| 9. | 380 Sft | 25 Sft | 405 Sft |
| 11 & 12 | 675 Sft | 25 Sft | 700 Sft |

Note : This Brochure is only a conceptual presentation and not a legal offering. The management reserves the right to change any/all of the specifications mentioned herein.

Ground Floor (Commercial Only)



| | | | |
|---|----------------------|--------------------------------|----------------------|
| Shop No : 2 | Total Area : 215 Sft | Shop Nos : 5,8,11,14,17,20,26. | Total Area : 242 Sft |
| Shop Nos : 3,4,6,7,9,10,12, 13,15,16, 18,19, 21, 22,24,25, 27,28. | Total Area : 180 Sft | Shop Nos : 23,29. | Total Area : 200 Sft |
| | | Shop No : 1 | Total Area : 395 Sft |

SPECIFICATIONS

| | |
|--------------------------|---|
| Foundation | RCC Footing in (1:2:4) Mix |
| Basement | CRS in CM (1:8) Mix |
| Structure | RCC (1:2:4) Mix |
| (Columns/Beams/Footings) | 4"/3" Hallow Cement Blocks (1:6) Mix |
| Walls | Single Coat Towel Finish in Composite Mix (1:1:12) |
| Plastering | Two Coat sponge finish in (1:6) |
| Internal | Wooden frames with flushed Shutters |
| External | Steel Windows with safety bars, grills and glass panelling |
| Doors | Grey Mosaic |
| Windows | AI. wiring with minimum 12 - maximum 15 Light & Fan points with 1 power plug |
| Flooring | Flooring with Mosaic, walls in smooth kalai finish with Redoxide upto 4 feet with Indian Closet |
| Electrical | |
| Toilets | |
| Colouring | Two Coats of White wash |
| Internal | Snowcem |
| External | Enamel |
| Doors&Windows | Cooking platform in polished Cuddapah stone with Mosaic Sink, Storage racks will be provided |
| Kitchen | |
| Common Areas | Cement kalai finish with suitable railing. |
| Staircase | |

MODIFICATIONS/ALTERATIONS ALLOWED ON EXTRA COST

1. Glazed Tiles/Ceramic in Toilets upto 4 ft/5 ft height & over Kitchen Platform upto 2ft height.
2. Shelves in Bed Room
3. Storage Lofts
4. OBD Painting any two colour decided by management
5. Shower and Gyser provision in Toilets
6. Showcase and RCC shelves in Hall
7. Extra Electrical Points/Power Plugs.

COMP
PRO
PRAJAY ENGINE
LTD (formerly En
cate) was establi
der the dynamic
Sri D.S. Chandra
The company h
strength to stren
fied projects like
deluxe flats, co
plexes, Independ
nies), open plots
etc. and its nam
Synonymous wit
Quality constructi
Prajay has alread
3,500 units to tru
tomers. It has be
by mechanising
cost effective m
their own manufa
Cement, Tiles, Ho
services of its ow

Should yo
to look at
flats you c
Prajay
Phase I a
the Engine